

## HEAVY DUTY TRASH PUMP

### EDP-SP-6x6L

150 MM HEAVY DUTY TRASH  
PUMP

#### APPLICATIONS OF ENGINE DRIVEN PUMPS

- Steel and Paper mills
- Mines
- Food processing plant
- Chemical processing plant
- Sewage handling
- Abattoirs
- Construction industry
- Dewatering
- Trade waste handling

Self priming with dependable performance makes EDP-SP Serie Pumps a sensible solution for industry and municipalities requiring little maintenance, resulting insignificant savings of time and money.

#### EDP-SP PUMPS :

**Renowned for their reliability.**

**A lasting investment.**

#### TRUSTED REPUTATION. PROVEN PERFORMANCE.

EDP-SP is a product of years of research and development expertise. We have been meeting the challenging needs of our clients for many years, by making sure they have the right equipment to get the work done.

EDP-SP is the solution for all aspects of waste water, sewerage, mining and solids laden liquids.

#### CREATING SOLUTIONS FOR A BETTER FUTURE.

Being the best takes determination, dedication and a desire for excellence. Using up-to-date technology and extensive research puts us ahead.

#### QUALITY GUARANTEED.

Renowned for their reliable robust operation, every product is subject to rigorous stringent testing and re-testing requirements. Using up-to-date technology and rugged construction materials, EDP-SP Pumps are built to last.

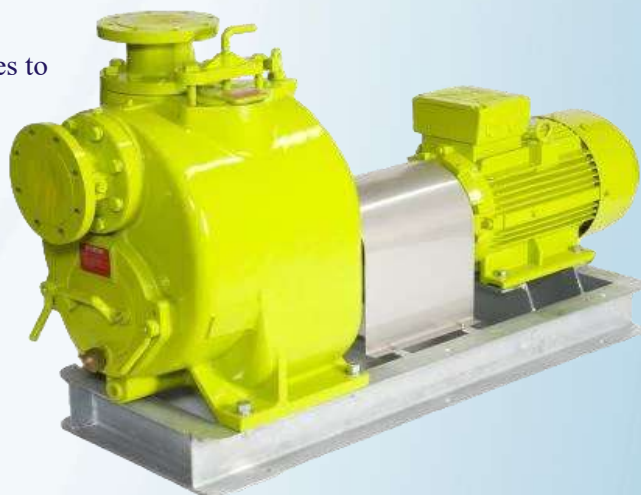
We guarantee we will provide the performance, quality and power you need.

#### SERVICE AND BACK UP.

EDP-SP is supported by an extensive range of spare parts and accessories to keep your equipment performing at its best.

#### WHY CHOOSE EDP-SP

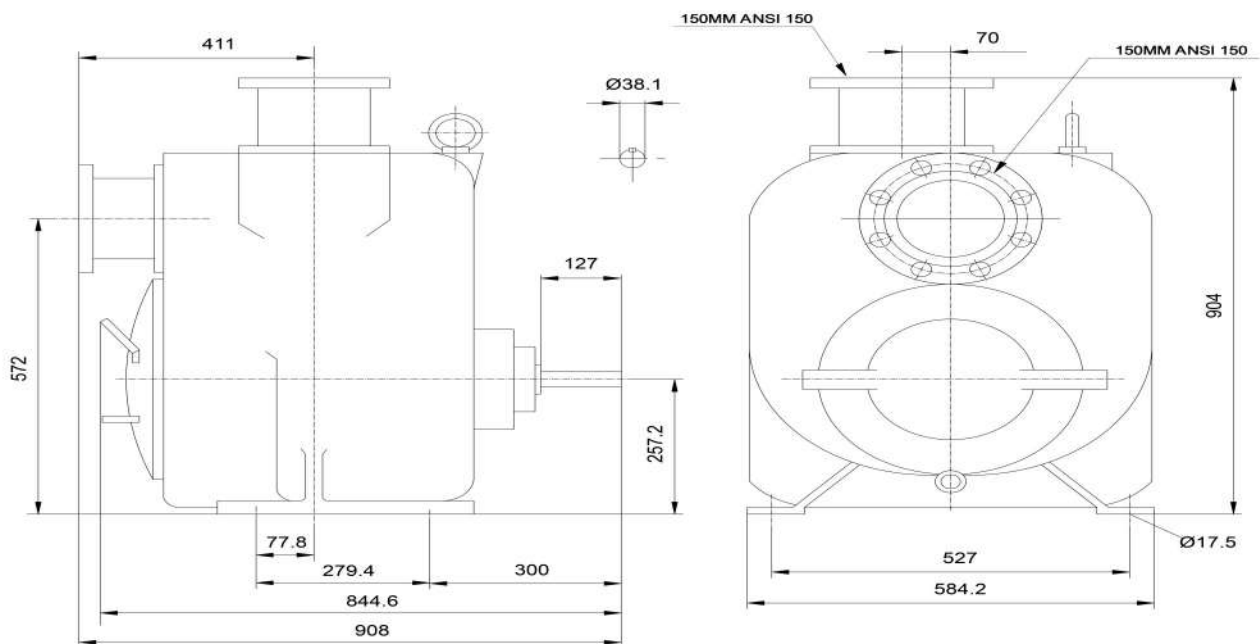
- Solid Reputation
- Self Priming
- Low Installation Cost
- Guaranteed Support
- Robust Construction
- Back Pull-Out Design
- Easy Maintenance



## HEAVY DUTY TRASH PUMP

### EDP-SP-6x6L

150 MM HEAVY DUTY TRASH  
PUMP



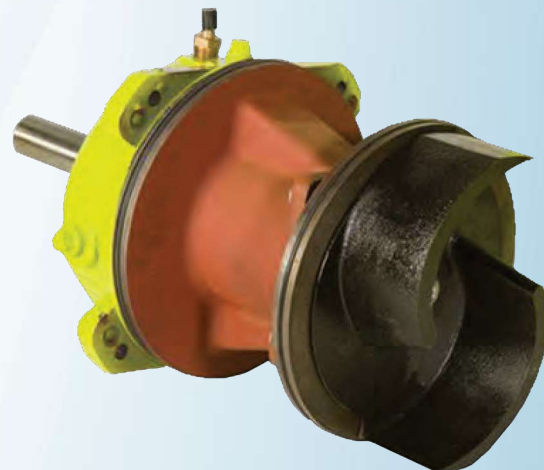
Approximate physical dimensions of pump model EDP-SP-6x6L

#### TECHNICAL DETAILS

<b>MAXIMUM OUTSIDE DIMENSIONS</b>	: 908mm (L) x 585mm (W) x 904mm (H)
<b>PUMP WEIGHT</b>	: 373 kilograms
<b>IMPELLER DIAMETER</b>	: 314.32 millimeters
<b>RPM</b>	: From 650 to 1550 RPM
<b>DISCHARGE</b>	: 150 millimeters maximum
<b>CAPACITY</b>	: Maximum 92 l/s
<b>HEAD</b>	: Maximum 33 meter
<b>SOLID HANDLING CAPACITY</b>	: 76 millimeters maximum

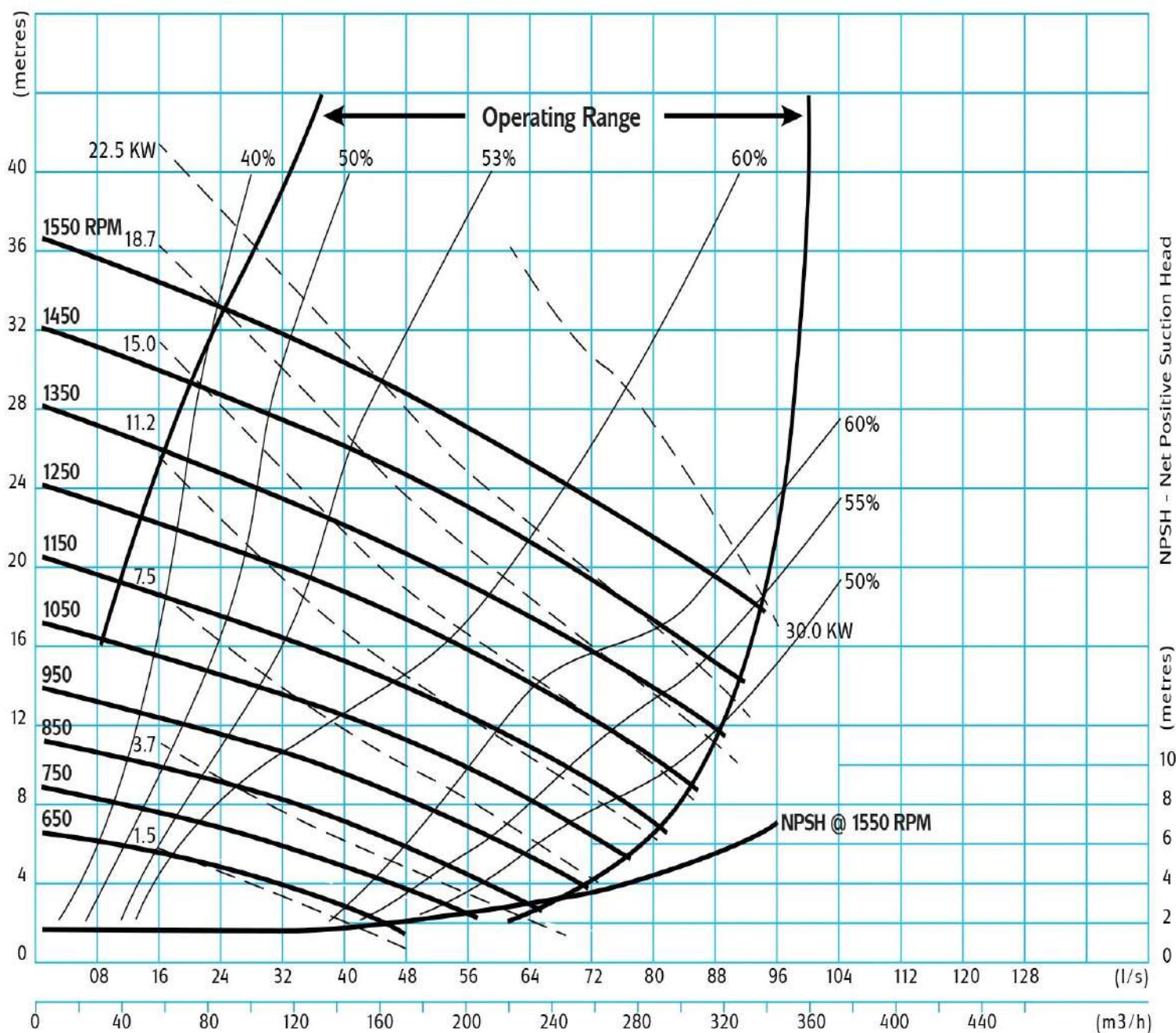
#### CONSTRUCTION

Materials for all EDP-SP Series models Cast Iron, 316 Stainless Steel and CD4MC





## PERFORMANCE CURVES EDP-SP-6x6L SERIES





## EDP-SP SERIES MAINTENANCE

### STEP 1



### STEP 2



### MAINTENANCE

Routine maintenance services are carried out quickly and easily with the use of standard tools, thus economizing Downtime and labor.

### CLEANING AND INSPECTION

Cleaning and inspection of EDP-SP Series Pump is undertaken without disconnecting the pipework. Cleaning and clearing are simple tasks, as are inspection and replacement of the impeller and seal, when necessary.

### STEP 3



### STEP 4



### SHIMLESS EXTERNAL IMPELLER ADJUSTMENT

An exclusive system to externally adjust the impeller clearance without disassembling the pump, using just an Allen wrench.

Simple adjustment can optimize pump efficiency while extending the life of both impeller and wear plate.

### STEP 5

